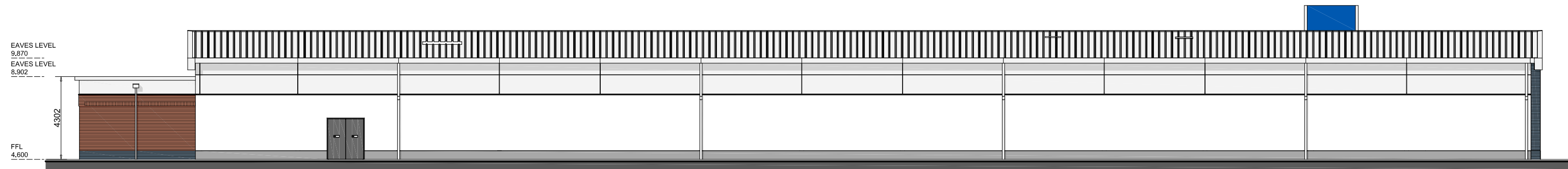
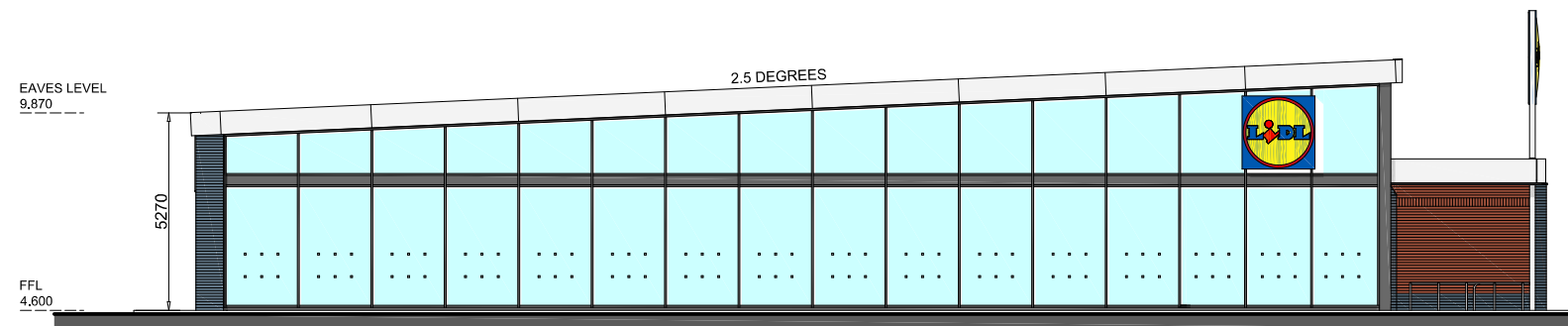


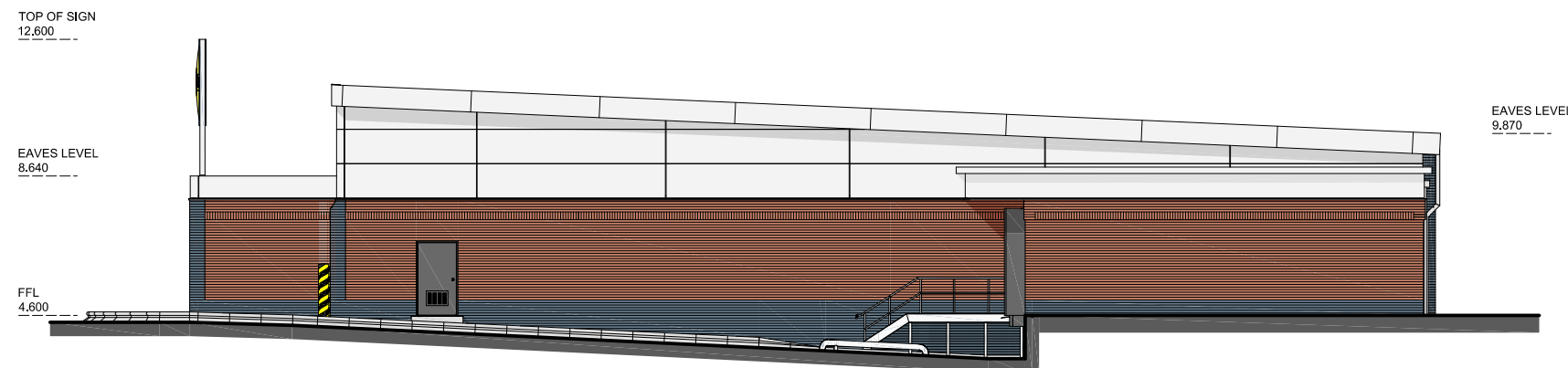
NORTH ELEVATION



SOUTH ELEVATION

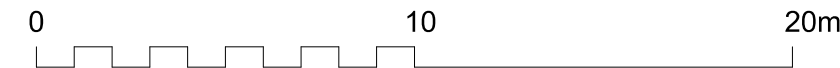


EAST ELEVATION



WEST SECTION / ELEVATION

PROPOSED MATERIALS	
WALLS	
	Red facing brick
	Blue engineering facing brick to plinth and details
	20mm mineral render painted white RAL 9010 with low level plinth in grey RAL 7038.
ROOF	
	Roof trim and rainwater goods: aluminium in silver metallic finish, RAL 9006.
	Trapezoidal metal composite panel roofing system in silver metallic RAL 9006 finish.
Sika Trocal single-ply flat roofing membrane to delivery bay and entrance canopy roof.	
SHOPFRONT GLAZING, ENTRANCE / EXIT LOBBY AND WINDOWS	
Powder coated aluminium framed, double glazed system in Graphite Grey, RAL 7024.	
EXTERNAL DOORS	
Steel external escape doors and sectional door for deliveries in Graphite Grey, RAL 7024.	



& POOLE PATTLE chartered architects
 TEL: 01473 230580 FAX 01473 231549 E-MAIL mail@pooleandpattle.co.uk
 5 OBSERVATION COURT 84 PRINCES STREET IPSWICH SUFFOLK IP1 1RY

Project	Lidl, Hayling Island	Date	Feb 2017	Scale	1:200 @ A3
Drawing	Elevations as Proposed	3671	05	N	

© This drawing must not be reproduced in whole or part without written consent